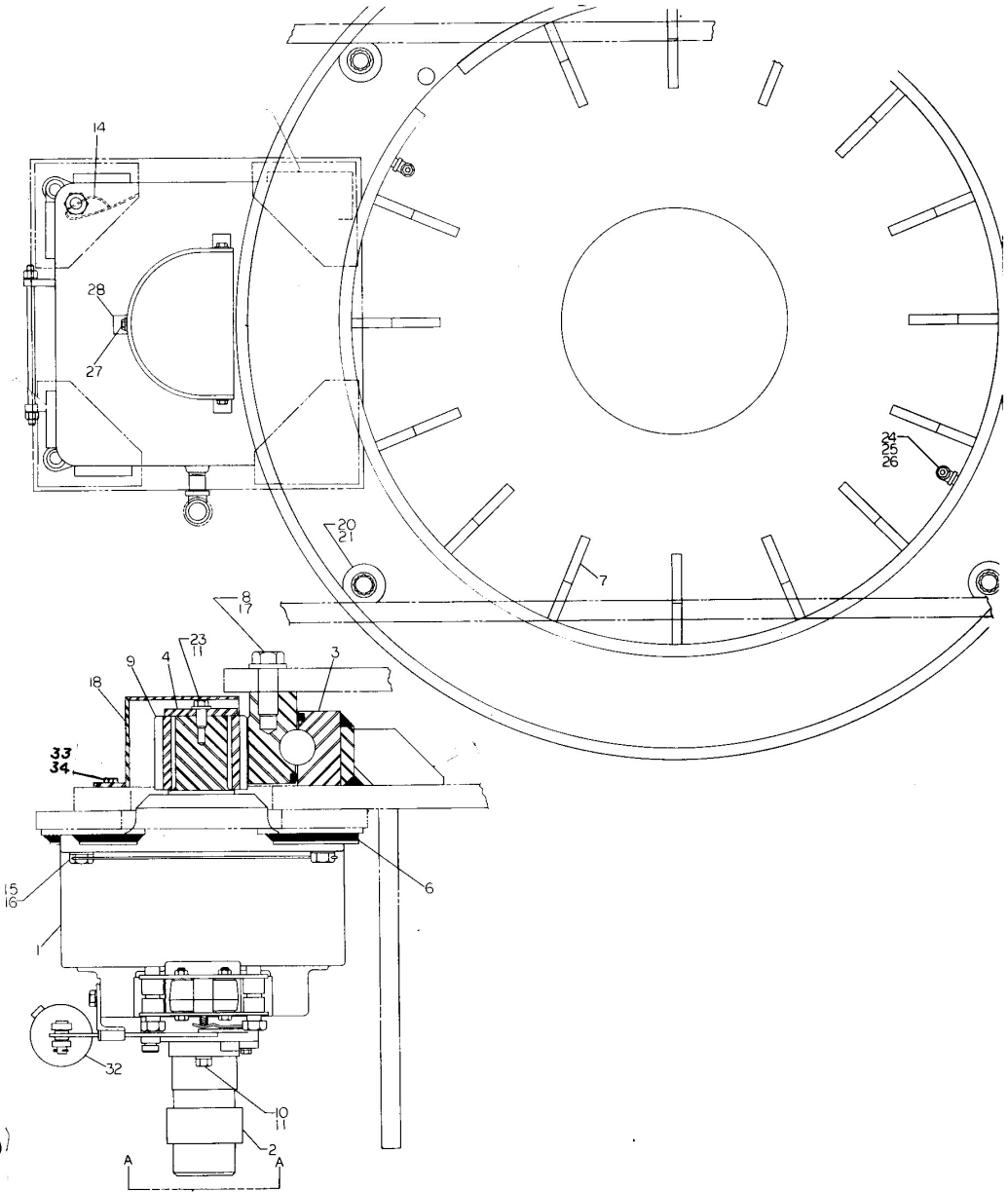
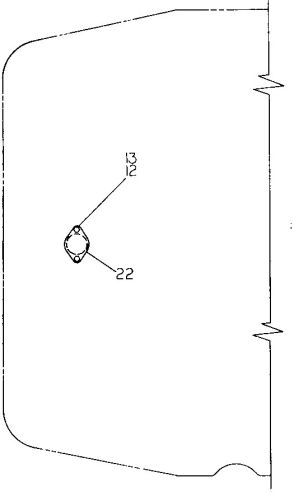
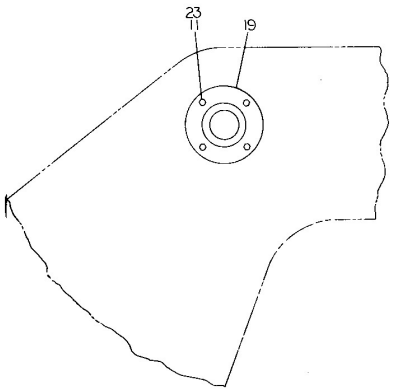
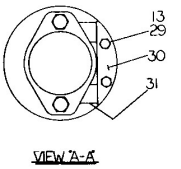


# Manitowoc Crane Group



1. INSTALL BOLTS (ITEM\*29)  
TO A SNUG TIGHTNESS
2. DRIVE WEDGE PLATES (ITEM\*31)  
TIGHT & WELD TO ITEM # 30 -  
OMIT WELD IN AREA OF  
LOCKWASHER. (ITEM \* 13 )
3. WRENCH TIGHTEN BOLTS.



2160200041

(SHEET 1 OF 1)

36XXe 166

2160200041